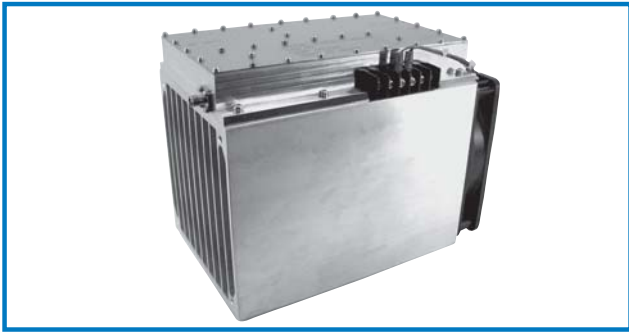


RF POWER AMPLIFIER

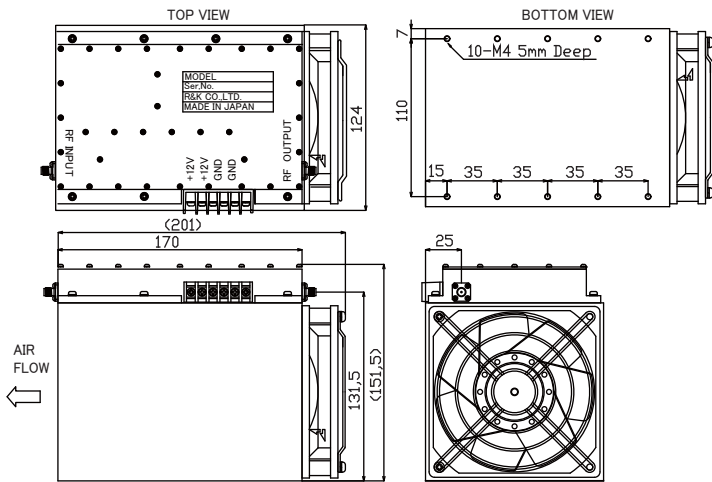


R&K-ALM2450BW100-4547M



OUTLINE DRAWING

※ IN MILLIMETERS



- Broadband Frequency: 2400MHz~2500MHz
- Output Power : 50W (typ.) @Psat.
- Gain Flatness : ±1.0dB (typ.)
- With Output circulator (For full power protection)

SPECIFICATIONS @ +25°C

Frequency Range	: 2400~2500MHz
Small Signal Gain	: +43dB (min.)
Gain Flatness	: ±1.0dB (typ.)
Output Power	: 50W (typ.) @Psat.
	: 25W (min.) @1dB Comp.
Output I.C.P.	: +50dBm (typ.) @2450MHz
Noise Figure	: 11dB (max.)
Impedance	: 50Ω
Input VSWR	: 1.5 : 1 (typ.)
Output VSWR	: 2.5 : 1 (typ.)
Maximum RF Input Power	: +6dBm
DC Supply Input	: +12V ±0.5V
	: 20A (max.)
Operating Temperature	: -10°C to +45°C
Storage Temperature	: -15°C to +65°C
Connectors	: SMA-FEMALE
Weight	: 3kg (typ.)

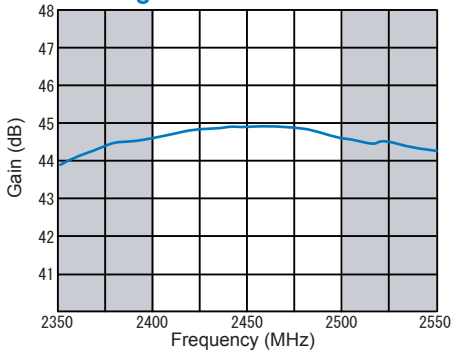
Forced Air Cooling Required

HOW TO ORDER

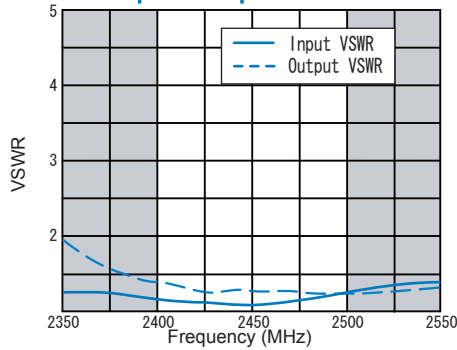
Model Name
R&K-ALM2450BW100-4547M No Option

TYPICAL PERFORMANCE (Temp @+25°C)

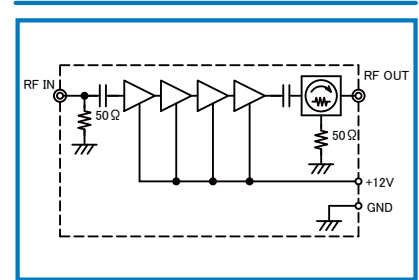
Small Signal Gain & Gain Flatness



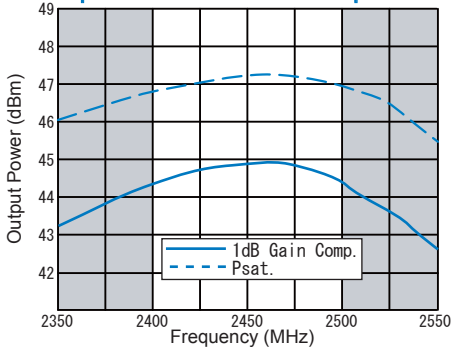
Input / Output VSWR



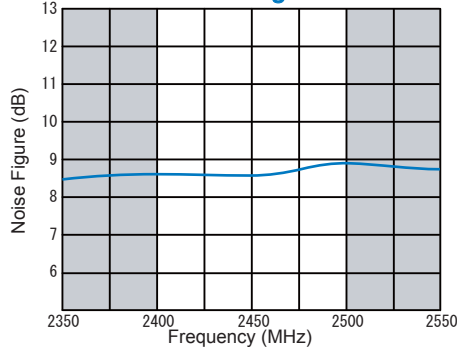
SCHEMATIC



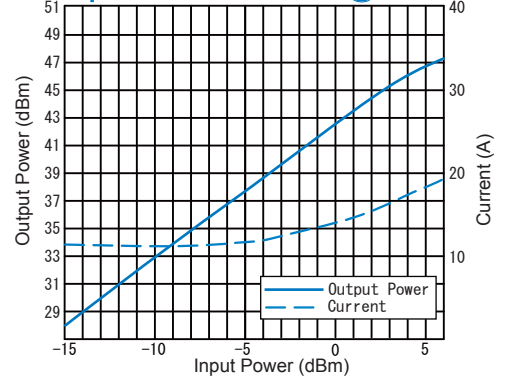
Output Power 1dB Gain Comp. & Psat



Noise Figure



Output Power vs Current @2450MHz



R&K reserves the right to make changes in the specifications of or discontinue products at any time without notice. R&K products shall not be used for or in connection with equipment that requires an extremely high level of reliability and safety such as aerospace uses or medical life support equipment. Further, R&K cannot export products to any country for use in military or defense applications.

R&K Company Limited

721-1 Maeda, Fuji-City, Shizuoka-Pref. 416-8577 Japan
Tel: +81-545-31-2600 E-mail: info@rkco.jp
Fax: +81-545-31-1600 URL: http://rk-microwave.com