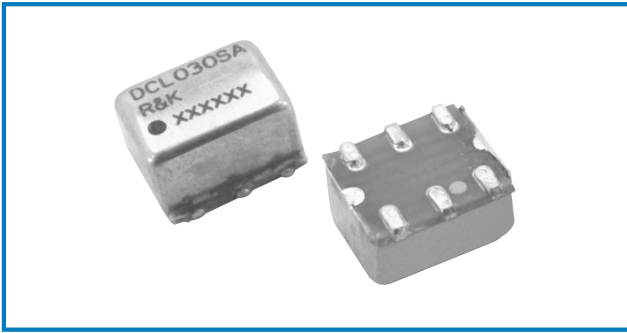


# DIRECTIONAL COUPLER

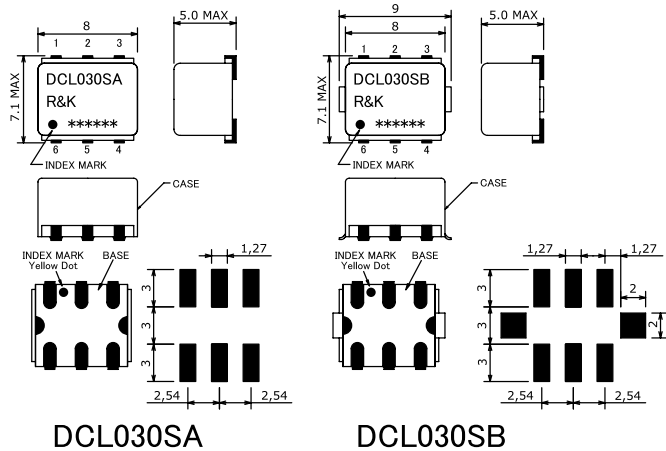


## R&K-DCL030



### OUTLINE DRAWING

※IN MILLIMETERS



- Frequency : 10-2000MHz
- Coupling 14.0dB Flat Response
- Small & Low Cost / Surface Mount
- RoHS Compliance

### SPECIFICATIONS

Frequency Range : 10-2000MHz  
Main Line Loss

	10 - 50MHz	50 - 200MHz	200 - 2000MHz
Typ.	1.3dB	1.2dB	1.8dB
Max.	2.0dB	1.5dB	2.0dB

#### Directivity

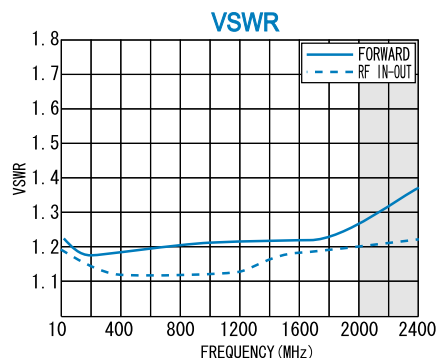
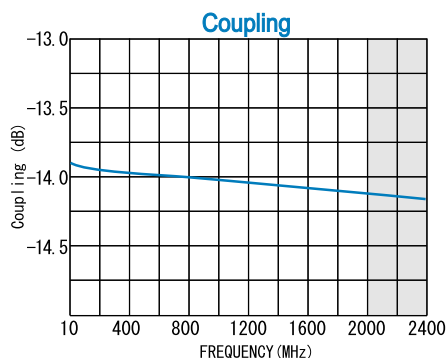
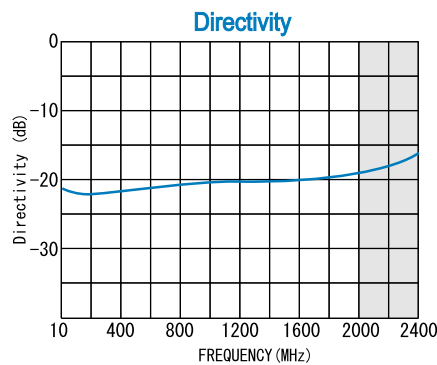
	10 - 50MHz	50 - 200MHz	200 - 2000MHz
Typ.	23dB	23dB	18dB
Min.	20dB	20dB	15dB

- Coupling : 14.0dB (nom.)
- Coupling Flatness :  $\pm 0.8$ dB (max.)
- VSWR (FWD) : 1.3:1 (max.)
- VSWR (Other) : 1.3:1 (max.)
- Impedance (All Ports) : 50  $\Omega$
- Maximum RF Input Power : 1W (max.)
- Internal Load Dissipation : 0.1W
- Operating Temperature : -40°C to + 85°C
- Storage Temperature : -40°C to +100°C
- Max.Reflow Soldering Temp. : 260°C, 10sec.
- Reflow Soldering Repeatability : 3 times
- Weight (Standard) : 0.48g (typ.)

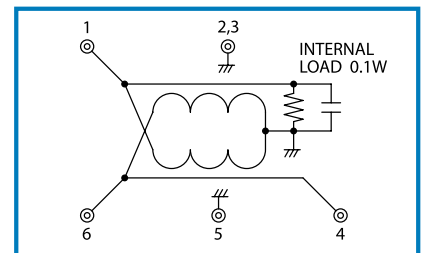
### HOW TO ORDER

Model Name R&K-DCL030SA-BLK  
 BLK=Antistatic bag  
 TR1=Tape & Reel Package  
 SA=Case Type of SA  
 SB=Case Type of SB

### TYPICAL PERFORMANCE (Temp @+25°C)



### SCHEMATIC



Function	Pin No.
Forward	1
RF-IN	6
RF-OUT	4
GND	2, 3, 5

R&K reserves the right to make changes in the specifications of or discontinue products at any time without notice. R&K products shall not be used for or in connection with equipment that requires an extremely high level of reliability and safety such as aerospace uses or medical life support equipment. Further, R&K cannot export products to any country for use in military or defense applications.

## R&K Company Limited

721-1 Maeda, Fuji-City, Shizuoka-Pref. 416-8577 Japan  
 Tel : +81-545-31-2600 E-mail : info@rk.co.jp  
 Fax : +81-545-31-1600 URL : http://rk-microwave.com