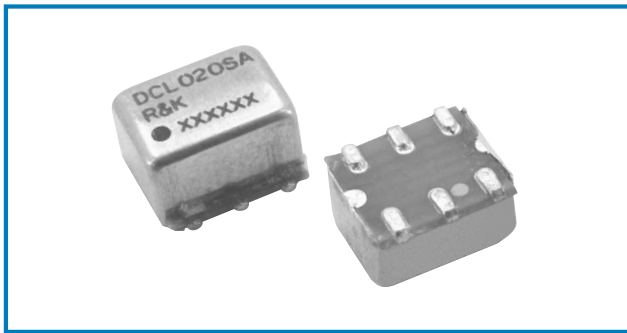


DIRECTIONAL COUPLER

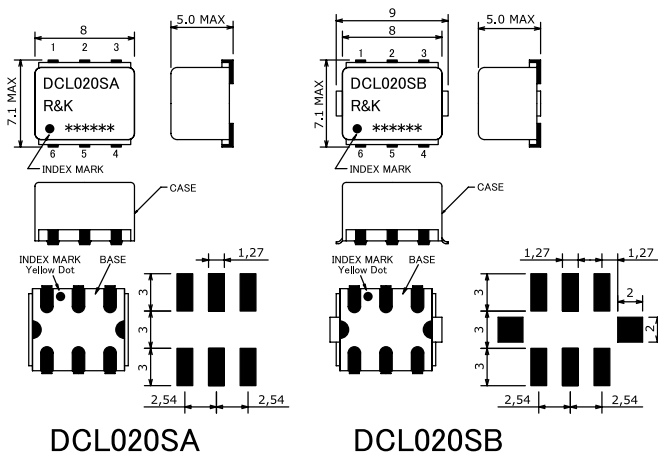


R&K-DCL020



OUTLINE DRAWING

※IN MILLIMETERS



- Frequency : 10-1000MHz
- Coupling 15.5dB Flat Response
- Small & Low Cost / Surface Mount
- RoHS Compliance

SPECIFICATIONS

Frequency Range : 10-1000MHz

Main Line Loss

	10 - 50MHz	50 - 200MHz	200 - 1000MHz
Typ.	1.0dB	0.8dB	1.0dB
Max.	2.0dB	1.1dB	1.3dB

Directivity

	10 - 50MHz	50 - 200MHz	200 - 1000MHz
Typ.	28dB	25dB	25dB
Min.	25dB	20dB	20dB

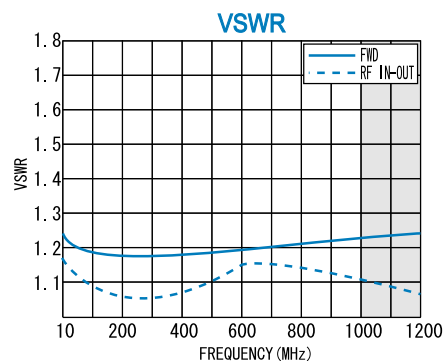
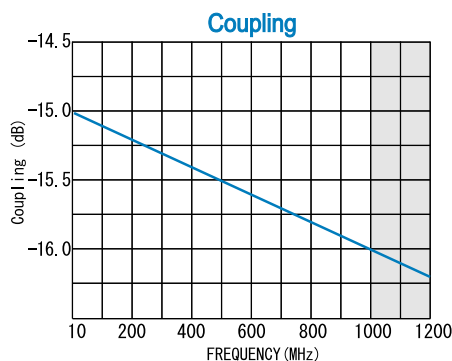
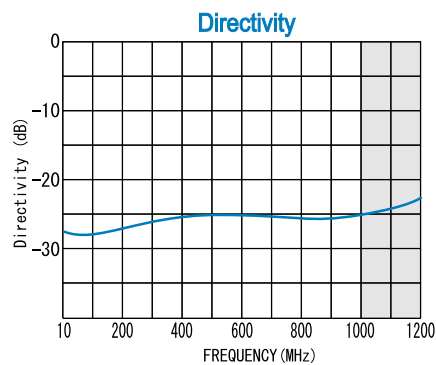
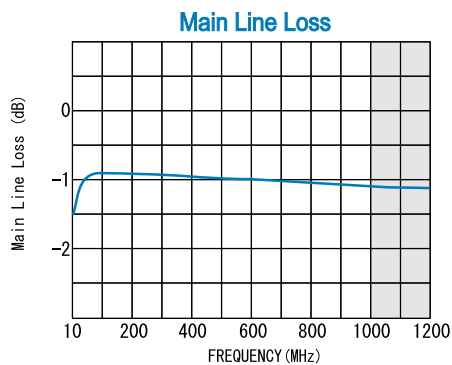
- Coupling : 15.5dB (nom.)
- Coupling Flatness : ± 0.8 dB (max.)
- VSWR (FWD) : 1.3 : 1 (max.)
- VSWR (Other) : 1.25:1 (max.)
- Impedance (All Ports) : 50 Ω
- Maximum RF Input Power : 1W (max.)
- Internal Load Dissipation : 0.1W
- Operating Temperature : -40°C to $+85^{\circ}\text{C}$
- Storage Temperature : -40°C to $+100^{\circ}\text{C}$
- Max.Reflow Soldering Temp. : 260°C , 10sec.
- Reflow Soldering Repeatability : 3 times
- Weight (Standard) : 0.48g (typ.)

HOW TO ORDER

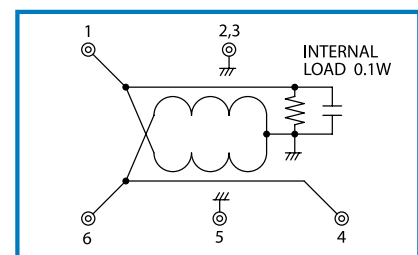
Model Name
R&K-DCL020SA-BLK

- BLK=Antistatic bag
- TR1=Tape & Reel Package
- SA=Case Type of SA
- SB=Case Type of SB

TYPICAL PERFORMANCE (Temp @+25°C)



SCHEMATIC



Function	Pin No.
Forward	1
RF-IN	6
RF-OUT	4
GND	2, 3, 5

R&K reserves the right to make changes in the specifications of or discontinue products at any time without notice. R&K products shall not be used for or in connection with equipment that requires an extremely high level of reliability and safety such as aerospace uses or medical life support equipment. Further, R&K cannot export products to any country for use in military or defense applications.

R&K Company Limited

721-1 Maeda, Fuji-City, Shizuoka-Pref. 416-8577 Japan
 Tel : +81-545-31-2600 E-mail : info@rk.co.jp
 Fax : +81-545-31-1600 URL : http://rk-microwave.com