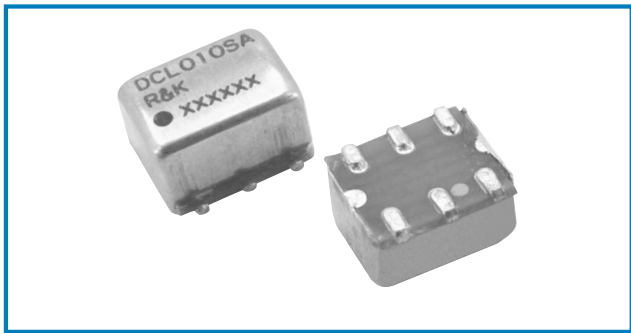


DIRECTIONAL COUPLER

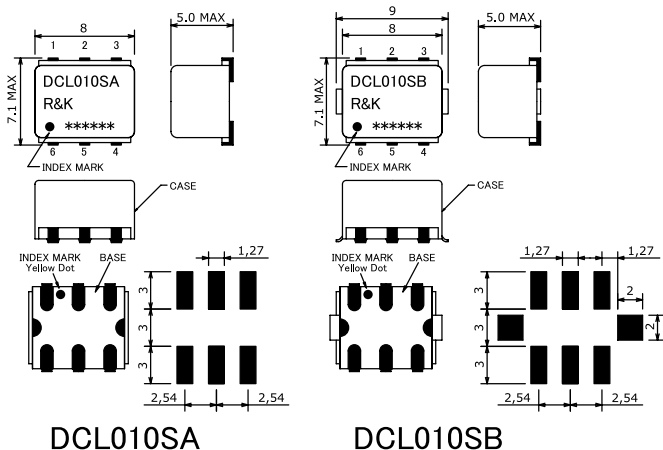


R&K-DCL010



OUTLINE DRAWING

※IN MILLIMETERS



- Frequency : 5-500MHz
- Coupling 13.0dB Flat Response
- Small & Low Cost / Surface Mount
- RoHS Compliance

SPECIFICATIONS

Frequency Range : 5-500MHz
Main Line Loss

	5 - 50MHz	50 - 200MHz	200 - 500MHz
Typ.	1.0dB	0.8dB	1.0dB
Max.	2.0dB	1.1dB	1.3dB

Directivity

	5 - 50MHz	50 - 200MHz	200 - 500MHz
Typ.	25dB	25dB	22dB
Min.	20dB	20dB	18dB

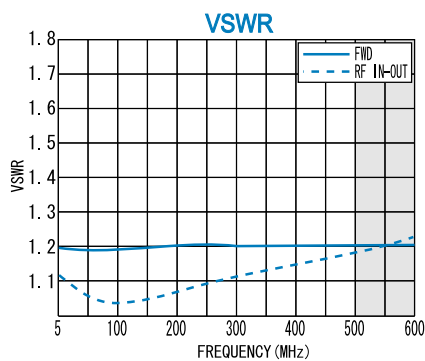
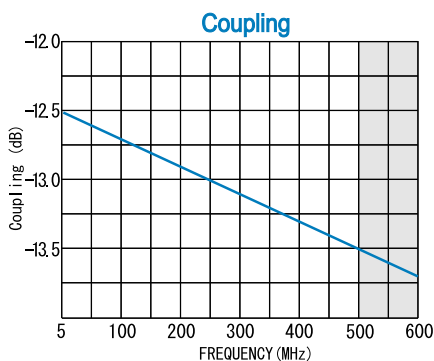
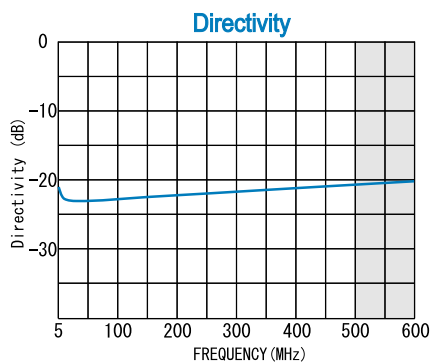
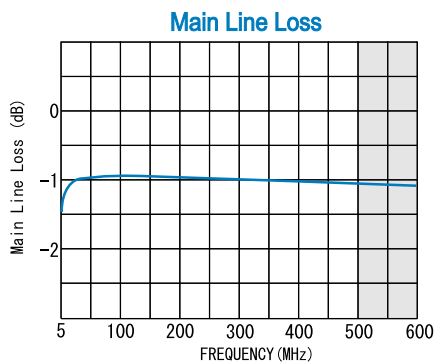
- Coupling : 13dB (nom.)
- Coupling Flatness : ± 0.8 dB (max.)
- VSWR (FWD) : 1.3 :1 (max.)
- VSWR (Other) : 1.25:1 (max.)
- Impedance (All Ports) : 50 Ω
- Maximum RF Input Power : 1W (max.)
- Internal Load Dissipation : 0.1W
- Operating Temperature : -40°C to $+85^{\circ}\text{C}$
- Storage Temperature : -40°C to $+100^{\circ}\text{C}$
- Max.Reflow Soldering Temp. : 260°C , 10sec.
- Reflow Soldering Repeatability : 3 times
- Weight (Standard) : 0.48g (typ.)

HOW TO ORDER

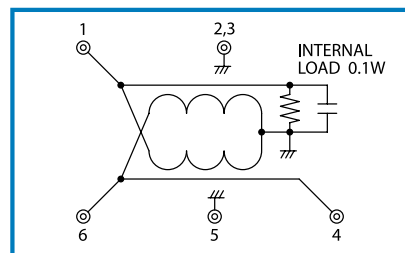
Model Name
R&K-DCL010SA-BLK

BLK=Antistatic bag
TR1=Tape & Reel Package
SA=Case Type of SA
SB=Case Type of SB

TYPICAL PERFORMANCE (Temp @+25°C)



SCHEMATIC



Function	Pin No.
Forward	1
RF-IN	6
RF-OUT	4
GND	2, 3, 5

R&K reserves the right to make changes in the specifications of or discontinue products at any time without notice. R&K products shall not be used for or in connection with equipment that requires an extremely high level of reliability and safety such as aerospace uses or medical life support equipment. Further, R&K cannot export products to any country for use in military or defense applications.

R&K Company Limited

721-1 Maeda, Fuji-City, Shizuoka-Pref. 416-8577 Japan
Tel : +81-545-31-2600 E-mail : info@rk.co.jp
Fax : +81-545-31-1600 URL : http://rk-microwave.com