

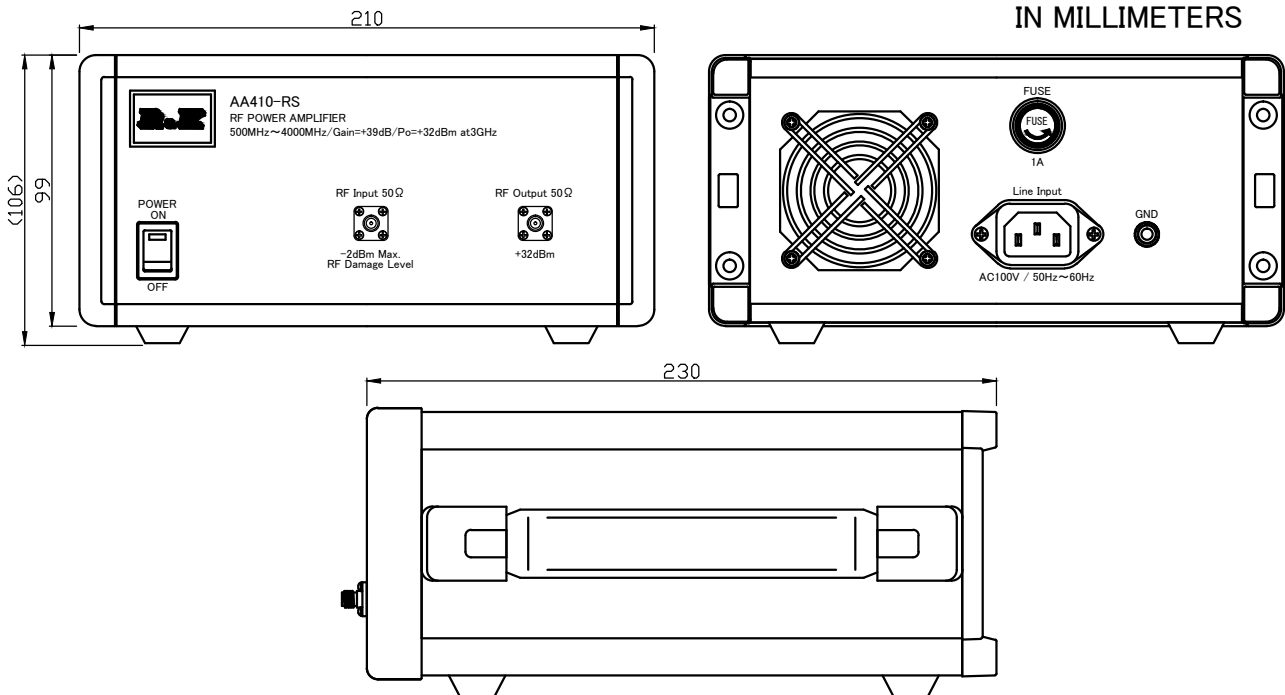
# SMALL SIGNAL AMPLIFIER MODEL ; R&K-AA410-RS

## SPECIFICATIONS

Frequency Range	; 500 – 4000MHz
Small Signal Gain	; +41dB (typ.) @3GHz ; +39dB (min.)
Gain Flatness	; ±2.0dB (max.)
Output Power@1dB Comp.	; +32dBm (min.) @3GHz
Output I.C.P.	; +43dBm (typ.) @3GHz
Noise Figure	; 10.0dB (max.)
Impedance	; 50 Ω
Input VSWR	; 1.8 : 1 (typ.)
Output VSWR	; 3.0 : 1 (typ.)
AC Supply Input	; AC100V 50/60Hz ; 0.5A (max.)
Maximum RF Input Power	; -2dBm
Operating Temperature	; -15°C to +45°C
Storage Temperature	; -15°C to +65°C
Connectors (In/Out)	; SMA-FEMALE
Weight	; 4.0kg (max.)

## OUTLINE DRAWING

IN MILLIMETERS



NOTE ; Specifications subject to change without notice.

2016/1/12 AC入力仕様変更

2016/3/3 図面番号修整

EK-20-0237-X-01 → EK-20-0241-X-01

2018/10/16 Spec. Change



株式会社  
アールアンドケー

AA410-RS

縮尺  
SCALE  
三角法

単位  
UNIT  
mm  
inch

作成年月日  
DRAWN

2015/5/15

仕様書

検認  
APPROVED

照査  
CHECKED

設計  
DESIGNED

作成  
DRAWN

Masahiko  
Suzuki

Susumu  
Tomotaka

Yuya  
Mochizuki

Yuya  
Mochizuki

EK-20-0241-3-01