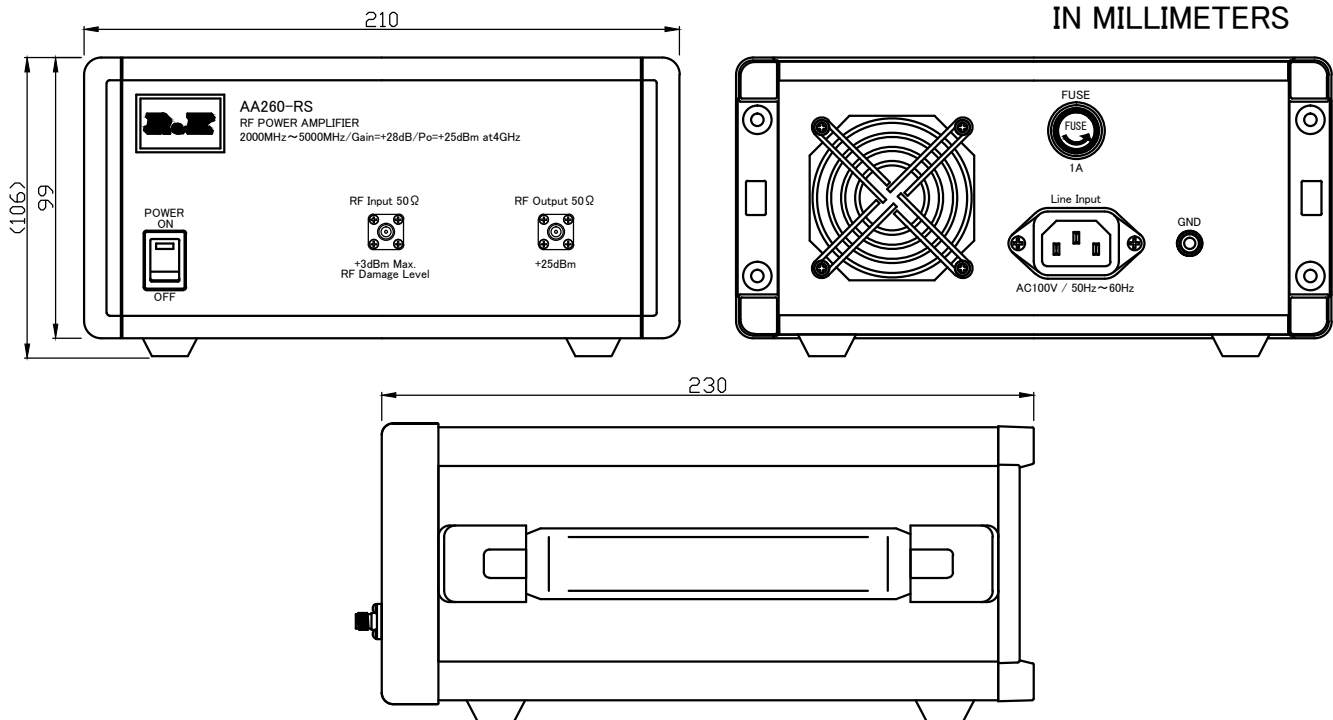


MODEL ; R&K-AA260-RS

SPECIFICATIONS

Frequency Range	; 2000 – 5000MHz
Small Signal Gain	; +31dB (typ.) @4GHz ; +28dB (min.)
Gain Flatness	; ±2.0dB (max.)
Output Power@1dB Comp.	; +25dBm (min.) @4GHz
Output I.C.P.	; +36dBm (typ.) @4GHz
Noise Figure	; 6.5dB (max.)
Impedance	; 50 Ω
Input VSWR	; 2.0 : 1 (typ.)
Output VSWR	; 3.0 : 1 (typ.)
AC Supply Input	; AC100V 50/60Hz ; 0.3A (max.)
Maximum RF Input Power	; +3dBm
Operating Temperature	; -15°C to +45°C
Storage Temperature	; -15°C to +65°C
Connectors (In/Out)	; SMA-FEMALE
Weight	; 3.0kg (max.)

OUTLINE DRAWING



NOTE ; Specifications subject to change without notice.

2018/10/16 Spec. Change



株式会社
アルアンドケー

AA260-RS

三 角 法	縮尺 SCALE	単位 UNIT
	/	mm inch

作成年月日
DRAWN

2009/11/5

仕様書

検認
APPROVED

照査
CHECKED

設計
DESIGNED

作成
DRAWN

Masahiko
Suzuki

Tomotaka

Masahiko
Suzuki

Takano

EK-20-0226-3-00