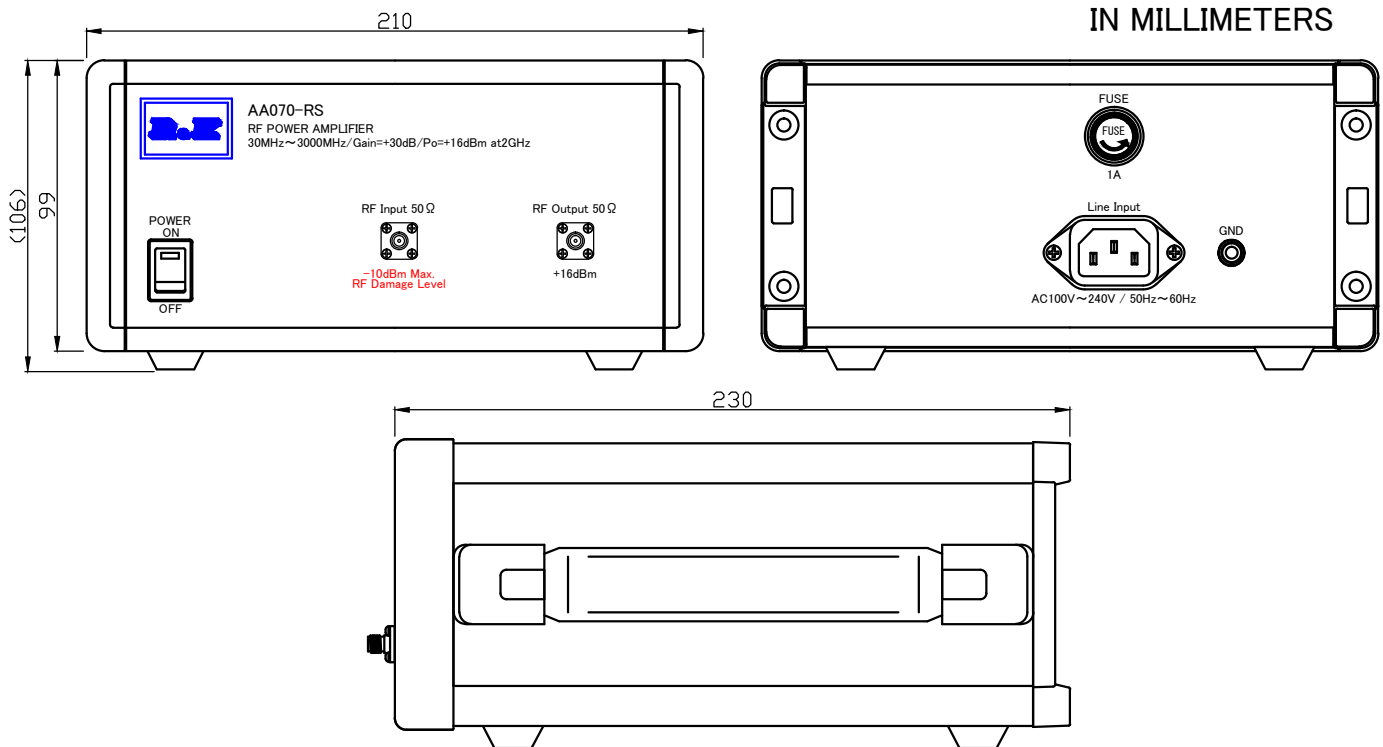


MODEL ; R&K-AA070-RS

SPECIFICATIONS

| | |
|------------------------|---|
| Frequency Range | ; 30 – 3000MHz |
| Small Signal Gain | ; +31dB (typ.) @2GHz ; +30dB (min.) |
| Gain Flatness | ; ± 1.5dB (max.) |
| Output Power@1dB Comp. | ; +16dBm (min.) @2GHz |
| Output I.C.P. | ; +28dBm (typ.) @2GHz |
| Noise Figure | ; 5.0dB (max.) |
| Impedance | ; 50 Ω |
| Input VSWR | ; 1.8 : 1 (typ.) |
| Output VSWR | ; 1.6 : 1 (typ.) |
| AC Supply Input | ; AC100~240V / 50~60Hz ; 20VA (max.) |
| Maximum RF Input Power | ; -10dBm |
| Operating Temperature | ; -15°C to +45°C |
| Storage Temperature | ; -15°C to +65°C |
| Connectors (In/Out) | ; SMA-FEMALE |
| Weight | ; 3.0kg (max.) |

OUTLINE DRAWING



NOTE ; Specifications subject to change without notice.

2014/5/22 Spec. Change
2018/10/16 Spec. Change

| | | | |
|--------------------|---------------|--------------------|--------------------|
| R&K | | 株式会社 アールアンドケー | |
| 縮尺 SCALE | 単位 UNIT | 作成年月日 DRAWN | |
| 三角法 | mm inch | 2009/11/04 | |
| 検認 APPROVED | 照査 CHECKED | 設計 DESIGNED | 作成 DRAWN |
| Masahiko Suzuki | Tomotaka | Masahiko Suzuki | Masahiko Suzuki |

AA070-RS

SPECIFICATION

EK-20-0207-3-01