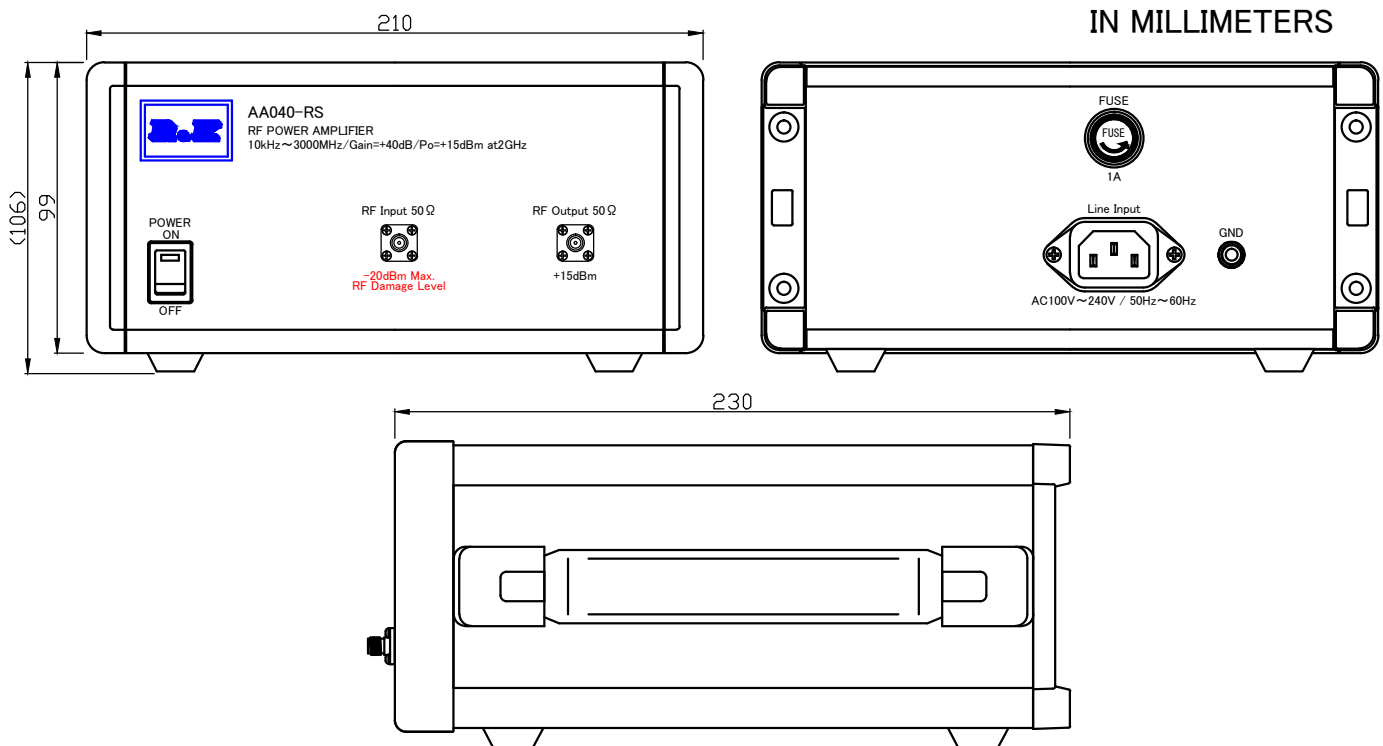


# MODEL ; R&K-AA040-RS

## SPECIFICATIONS

Frequency Range	; 0.01 – 3000MHz
Small Signal Gain	; +41dB (typ.) @2GHz ; +40dB (min.)
Gain Flatness	; ± 1.5dB (max.)
Output Power@1dB Comp.	; +15dBm (min.) @2GHz
Output I.C.P.	; +28dBm (typ.) @2GHz
Noise Figure	; 5.0dB (max.)
Impedance	; 50 Ω
Input VSWR	; 1.5 : 1 (typ.)
Output VSWR	; 1.6 : 1 (typ.)
AC Supply Input	; AC100~240V / 50~60Hz ; 20VA (max.)
Maximum RF Input Power	; -20dBm
Operating Temperature	; -15°C to +45°C
Storage Temperature	; -15°C to +65°C
Connectors (In/Out)	; SMA-FEMALE
Weight	; 3.0kg (max.)

## OUTLINE DRAWING



NOTE ; Specifications subject to change without notice.

2014/5/1 Spec. Change  
2018/10/16 Spec. Change

		株式会社 アールアンドケー	
		作成年月日 DRAWN	
三角法	縮尺 SCALE	単位 UNIT	2009/11/04
	(mm) inch		
検認 APPROVED	照査 CHECKED	設計 DESIGNED	作成 DRAWN
Masahiko Suzuki	Tomotaka	Masahiko Suzuki	Masahiko Suzuki

AA040-RS

SPECIFICATION

EK-20-0204-3-01