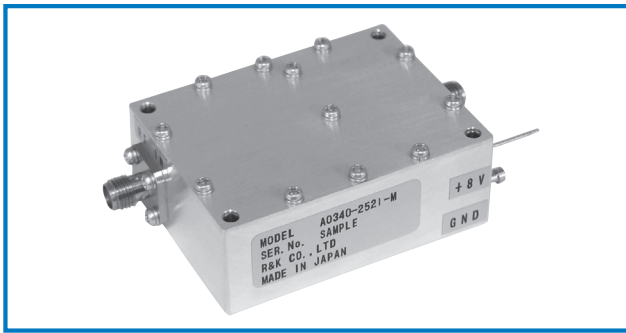
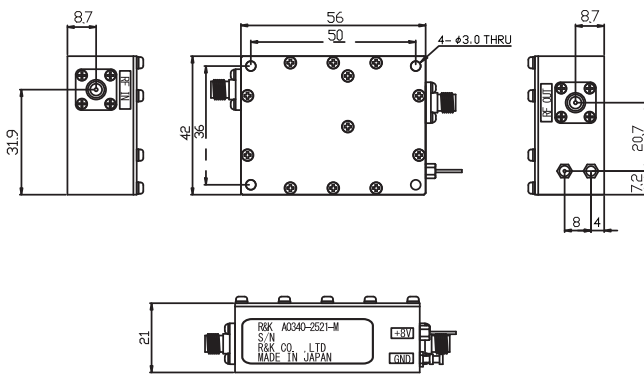


R&K-A0340-2521-M



OUTLINE DRAWING

※IN MILLIMETERS



- Broadband Frequency : 300~4000MHz
- Output Power : +22dBm (typ)
- Gain Flatness : ±2.0dB (max.)
- **Low Cost** : @¥21,600

SPECIFICATIONS

Frequency Range	: 300 – 4000MHz
Small Signal Gain	: +25dB (typ.) : +22dB (min.)
Gain Flatness	: ±2.0dB (max.)
Input Return Loss	: –10dB(max.)
Output Return Loss	: –4.5dB(max.)
Output Power @1dB Comp.	: +22dBm (typ.) @2GHz : +21dBm (min.)
@sat.	: +23dBm (typ.)
DC Supply Input	: +8V / 0.3A(max.)
Maximum RF Input Power	: –1dBm
Operating Temperature	: –10°C to +45°C
Storage Temperature	: –15°C to +65°C
Connectors	: SMA-FEMALE
Weight	: 80g (typ.)

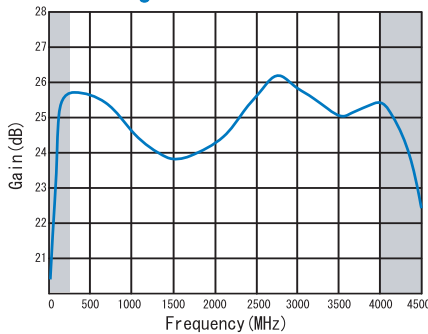
HOW TO ORDER

Model Name
R&K-A0340-2521-M

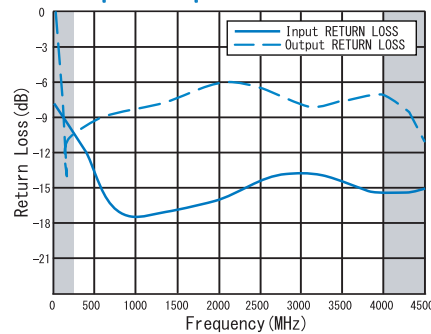
└──────────┘ No Option

TYPICAL PERFORMANCE (Temp @+25°C)

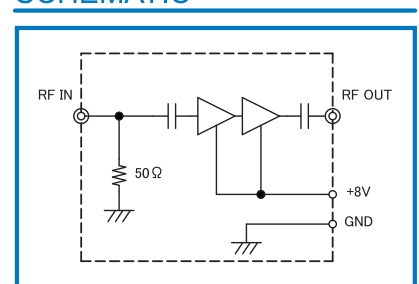
Small Signal Gain & Gain Flatness



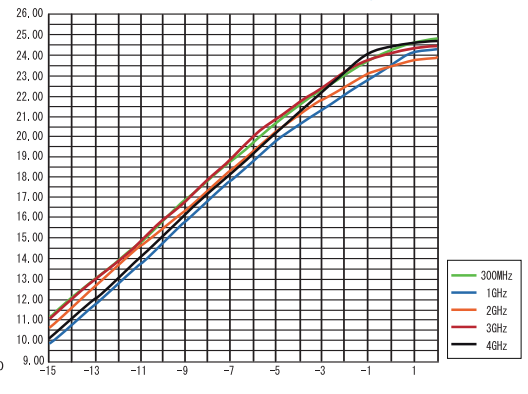
Input / Output RETURN LOSS



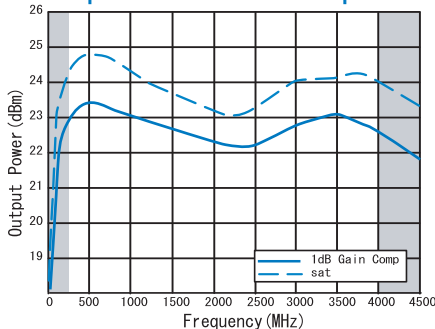
SCHEMATIC



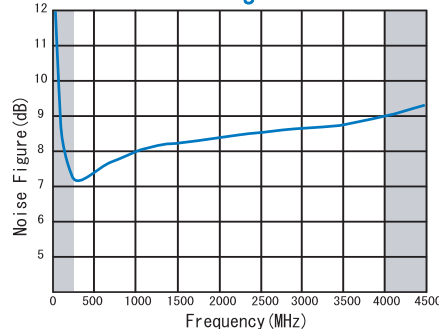
Output Power Linearity



Output Power 1dB Gain Comp.&sat



Noise Figure



R&K reserves the right to make changes in the specifications of or discontinue products at any time without notice. R&K products shall not be used for or in connection with equipment that requires an extremely high level of reliability and safety such as aerospace uses or medical life support equipment. Further, R&K cannot export products to any country for use in military or defense applications.

R&K Company Limited

721-1 Maeda, Fuji-City, Shizuoka-Pref. 416-8577 Japan
Tel : +81-545-31-2600 E-mail : info@rkco.jp
Fax : +81-545-31-1600 URL : http://rk-microwave.com